

Editorial Board

Patron:

Anwar Ul Haque

Chief Editor:

Nuzhat S. Khattak

Managing Editor:

Waheed Iqbal

Associate Editor:

Feroz Ali

Assistant Editor:

Rehmat Khan

Imran Nazir

Members Editorial Board International:

Shakeel Faisal (USA)

Thomas Helland (Norway)

Xingyuan Yang (China)

Waqas Sami (Saudi Arabia)

Deema Hussein (Jeddah)

Hazrat Bilal (China)

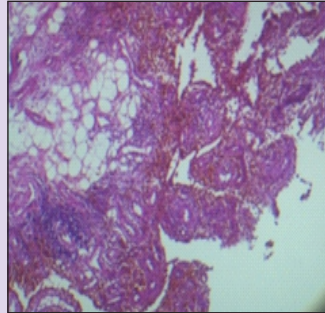
Members Editorial Board National:

Ahmareen Khalid (Islamabad)

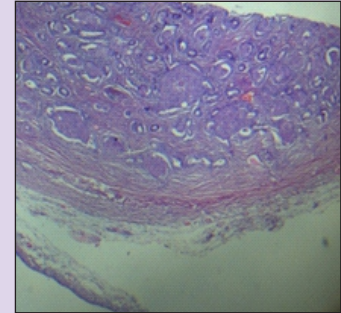
Sadaf Durrani (Peshawar)

Irfan Ullah (Lahore)

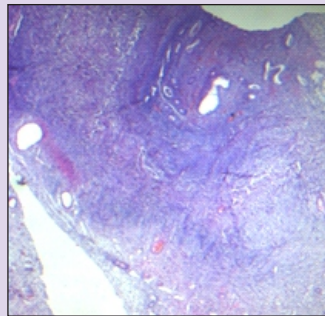
Romana Idress (Karachi)



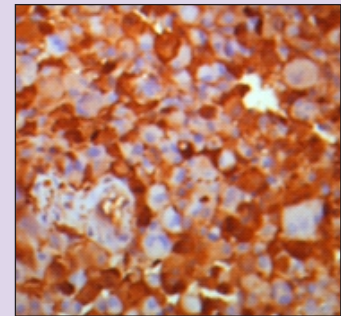
**Hemosiderotic Synovitis
(10x)**



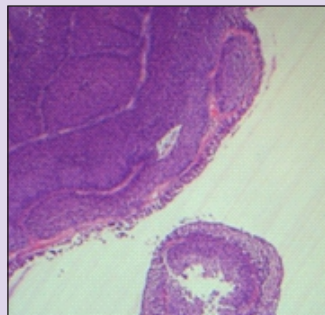
**Squamous Morules in
Endometrial Carcinoma (10x)**



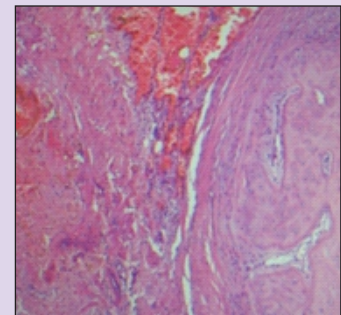
**Endometriosis Ovary
(10x)**



**Gemistocystic Astrocytoma
S100 + (40x)**



**Inverted Nasal Papilloma
(10x)**



**Soft Tissue Osseous
Metaplasia (10x)**



Printer

Sohail Altaf Printers

Tel: 051-5770388

sohailaltaf1958@gmail.com

For Correspondence

Chief Editor IJP

H. No: 241, Street #:04, Sector J-1, Phase-02

Hayatabad, Peshawar- 25000.

Phone: +92-91-5817216, 0331-8233622

Email: editijp@gmail.com

Web sites: 1) <http://www.jpathology.com>

2) <http://www.pakmedinet.com>

3) <http://www.emro.who.int/emrjorlist/details.aspx?docn=1357>