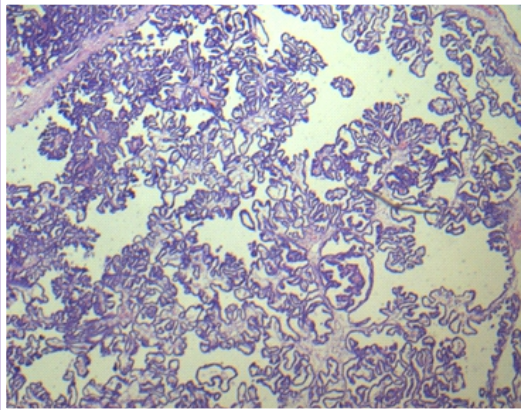


International Journal of Pathology

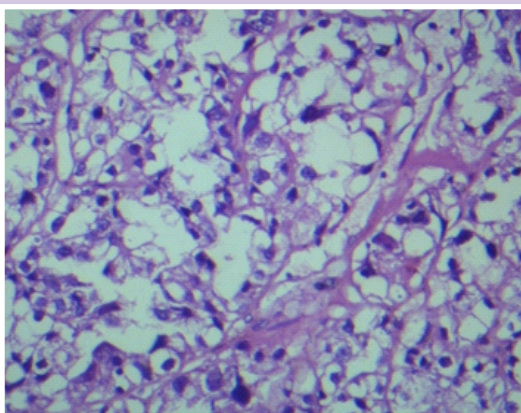
ISSN# 1810 - 0155
Online ISSN# 2079-7516
Recognized by
Higher Education Commission
www.jpathology.com
int.j.pathol



Volume 20(2)
Apr-Jun, 2022



**Choroid Papilloma
(10x)**



**Clear Cell Carcinoma Cervix
(40x)**

EDITORIAL

Importance of Ethics in Medical Research

Anwar Ul Haque

ORIGINAL ARTICLES

Role of Therapeutic Plasma Exchange in Improving Inflammatory and Thrombotic Biomarker Levels in Covid 19 Patients: Experience from Tertiary care Hospital of Balochistan

Saima Bashir, Hamid Iqbal, Azeema Ahmad, Javaria Ahsan, Fatima Sana, Nadeem Fazal

Risk Factors of Carcinoma Breast and their Changing Trends

Farzana Sabir, Ziyad Afzal, Shamaila Manzoor, Irum Gillani, Sarmud Lateef, Naheed Akhter

Efficacy of Nasal Steroids in Treatment of Adenoidal Hypertrophy in Children

Azam Khan, Khalil Ahmad Orakzai, Allah Noor, Shahzad Saeed Ullah, Mamoor Khan, Mustafa Qazi

Proper Bacillus Calmette-Guérin (BCG) Scar Formation and Administration in Children under 2 years in a Tertiary Care Hospital

Sher Afghan Khan, Sarah Zahid, Sameer Ahmad, Inayat Ur Rehman, Abdul Samad, Kanza Hamid

Fusidic Acid Susceptibility in Staphylococci from Clinical Isolates at a Tertiary care Hospital in Lahore

Sheraz Hussain, Mariam Danish Iqbal, Tahir Naeem, Saadia Ijaz

Analysis of Dengue Virus Genotypes and Further Investigations for Mixed Infections Through RT-PCR in Classical Dengue Fever Patients in Pakistan

Fazal Hanan, Jawad Ahmad, Shamsul Hadi, Ijaz Ali, Muhammad Fahim, Asif Qayum

Demographic Characteristics, Clinical Features, and Laboratory-Workup of Pediatric Patients Infected With COVID-19 at Setif, Algeria

Salman Zahir, Safa Berrou

Demographic Factors Influence the Laboratory Parameters in COVID 19 Patients - Experience from Tertiary Care Center in Islamabad

Summaya Sohail, Sundas Ali, Armaghana Qamar Khan, Javera Tariq, Maha Tariq, Sohail Raza

SHORT COMMUNICATION

A Novel Diagnostic Test for Pre-Eclampsia: Congo Red Dot Test

Haleema Anwar, Iqra pervaiz, Hamyel Tahir, Hafiz Adnan Saleem, Rafia Yaseen, Qudsia Umaira Khan

AIMS & Objectives of International Journal of Pathology (IJP)

Editorial Policy of International Journal of Pathology (IJP)

Instructions for Authors

Page

43

45

50

56

62

67

72

79

84

90

Title Page
Inner Side
Inner Side
Back Page
Back Page

Editorial Board

Patron:

Anwar Ul Haque

Chief Editor:

Nuzhat S. Khattak

Managing Editor:

Waheed Iqbal

Associate Editor:

Feroz Ali

Assistant Editor:

Rehmat Khan

Imran Nazir

Members Editorial Board

International:

Shakeel Faisal (USA)

Thomas Helland (Norway)

Xingyuan Yang (China)

Waqas Sami (Saudi Arabia)

Deema Hussein (Jeddah)

Hazrat Bilal (China)

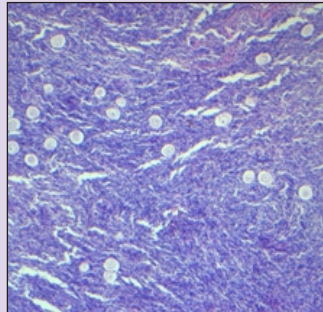
Members Editorial Board National:

Ahmareen Khalid (Islamabad)

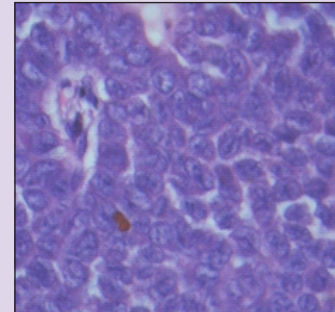
Sadaf Durrani (Peshawar)

Irfan Ullah (Lahore)

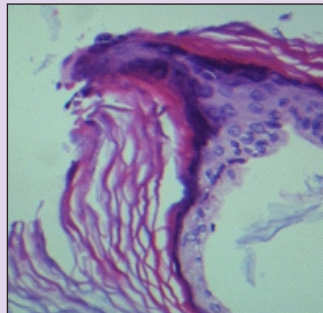
Romana Idress (Karachi)



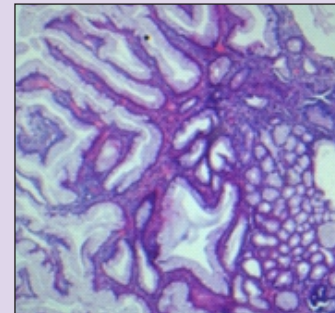
Graffian Follicles Ovary
(10x)



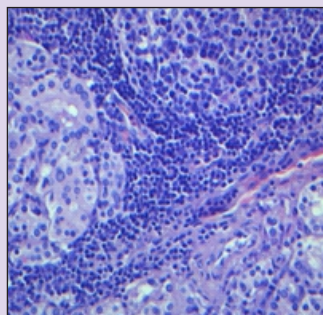
Coffee Beans Nuclei and
Call-Exner Bodies In
Granulosa Cell Tumor (40x)



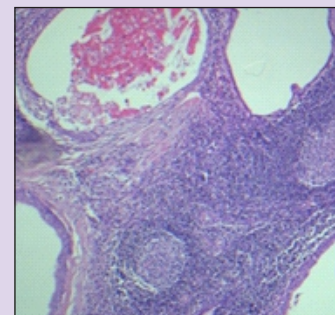
Prominent Granular Layer in
Epidermal Inclusion Cyst (40x)



Gastric Hyperplastic Polyp
(10x)



Hashimoto's Thyroiditis
(40x)



Warthin Tumor Salivary
Gland (10x)



Printer

Sohail Altaf Printers

Tel: 051-5770388

sohailaltaf1958@gmail.com

For Correspondence

Chief Editor IJP

H. No: 241, Street #:04, Sector J-1, Phase-02

Hayatabad, Peshawar- 25000.

Phone: +92-91-5817216, 0331-8233622

Email: editijp@gmail.com

Web sites: 1) <http://www.jpathology.com>

2) <http://www.pakmedinet.com>

3) <http://www.emro.who.int/emrjorlist/details.aspx?docn=1357>